

What help is available?

Category 1 - English Language Training (Childcare)



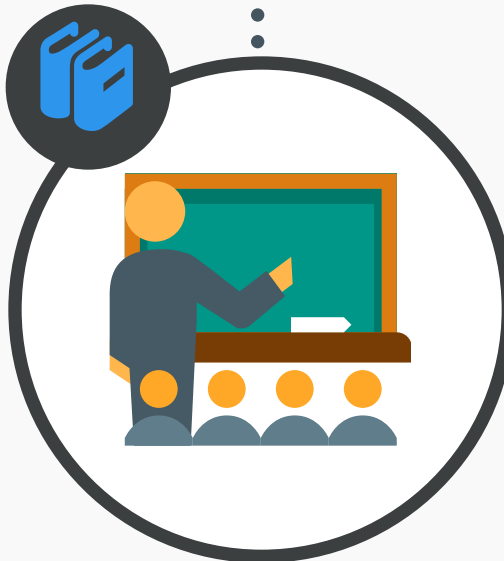
- ESOL providers can apply for financial assistance towards activities to facilitate the delivery of language training, such as traditional forms of childcare, crèches or playgroups, or existing childcare providers delivering English Language Training in addition to their services. More innovative approaches to Language Training are also welcome!

Submissions by 21st August 2020 (Childcare)

Category 2 - Additional Language Training Fund



- The Funding can provide support to increase NIRRS refugees' access to **formal language training** appropriate to their ability and needs. It can also be used to support **informal language training** that does not lead to an accredited qualification, but can help a learner progress to Entry Level ESOL, or on instances where deemed more appropriate. The principal outcome to be achieved through use of the Funding is to enhance the English language skills of adult refugees and to improve their resettlement, integration experience and employability prospects. FROM PRE-ENTRY UP TO ENTRY LEVEL 3 INITIATIVES ONLY.



- It could be used particularly for assistance accessing suitable and sustainable employment, including sector-specific support.

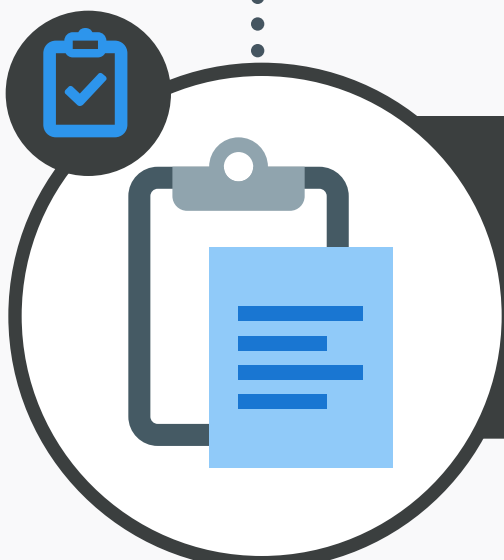


- The Funding can also be used to support activities that help overcome accessibility barriers and other infrastructural or logistical issues.



Submissions by 21st August 2020

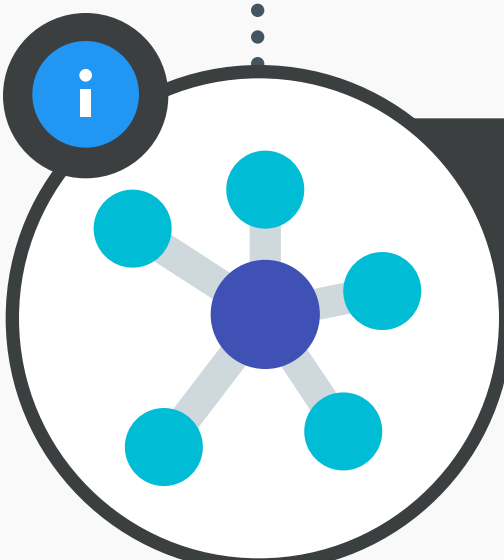
Submit your proposal by completing the *Submission claim for Funding



- Separate claims should be completed per Funding category, including a breakdown of costs, should your initiative require assistance from both categories available.



Please ensure proposals are submitted prior to deadlines set for each category of Funding.



ESOL Regional Co-ordination Point

Funding claims are to be completed and sent directly to the - ESOL Regional Co-ordination Point
For further information please request your ***Guidance Document** and the ***Submission claim for Funding** from:



Belfast Metropolitan College
Ligia Parizzi
ESOL – Regional Co-ordinator
LParizzi@belfastmet.ac.uk 07814046391